

MATTHEW JAMES

Residential Sales • Lettings • Management



36 Clive Lodge Shirehall Lane, Hendon, NW4 3RG

Asking Price £325,000

Clive Lodge is a purpose built block on Shirehall Lane positioned very close to Brent Cross shopping centre and moments from the lovely green spaces of Hendon Park.

We offer for sale a top floor purpose built flat requiring refurbishment and offering spacious accommodation with 2 double bedrooms and a nice size lounge.

TOP FLOOR

ENTRANCE HALL

Entryphone, storage cupboard plumbed for washing machine.

LOUNGE



Fireplace, double glazed windows to front.

KITCHEN

Fitted wall and base units, work surface with single stainless steel sink and drainer with mixer tap, gas cooker, electric oven, fridge freezer, double glazed window and door to rear giving access to rear gangway.

BEDROOM ONE



Fitted wardrobes, double glazed windows to front.

BEDROOM TWO



Double glazed window to rear.

BATHROOM



Tiled panel enclosed bath with mixer tap and hand shower attachment, wash basin, low flush WC, tiled floor and walls, double glazed window to rear, heated towel rail.

Additional Information

Leasehold expires 25/08/2161 - 139 years remain
Service Charge £2,234.44 per annum reviewed April annually
Ground Rent £150 per annum
Council Tax Band C

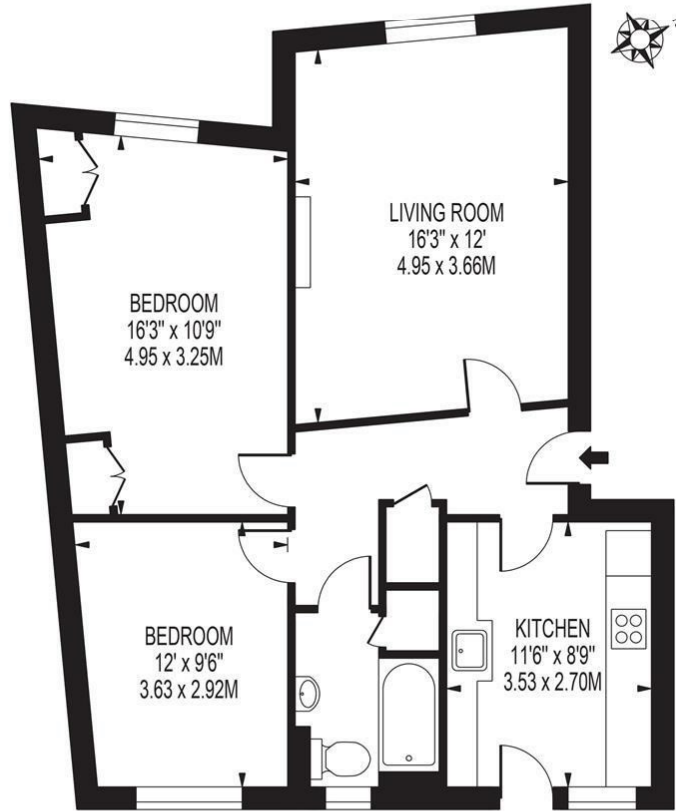
COMMUNAL GARDEN

Lovely communal garden to the rear of the building.

Floor Plan

CLIVE LODGE

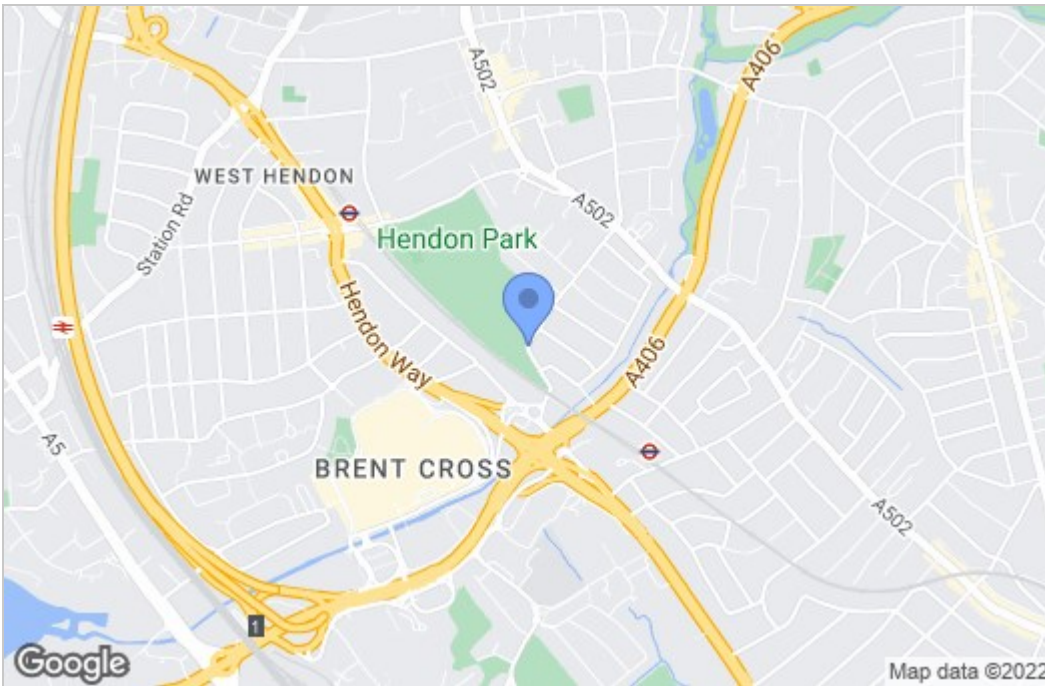
APPROXIMATE GROSS INTERNAL FLOOR AREA: 699 SQ FT - 64.95 SQ M



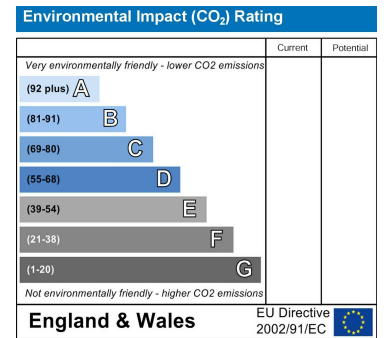
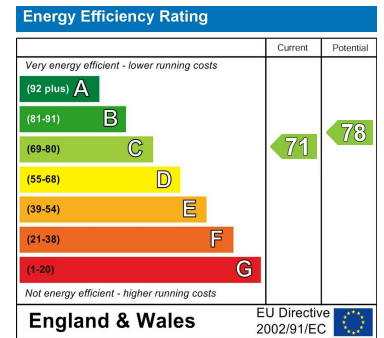
FOR ILLUSTRATION PURPOSES ONLY

THIS FLOOR PLAN SHOULD BE USED AS A GENERAL OUTLINE FOR GUIDANCE ONLY AND DOES NOT CONSTITUTE IN WHOLE OR IN PART AN OFFER OR CONTRACT. ANY INTENDING PURCHASER OR LESSEE SHOULD SATISFY THEMSELVES BY INSPECTION, SEARCHES, ENQUIRIES AND FULL SURVEY AS TO THE CORRECTNESS OF EACH STATEMENT. ANY AREAS, MEASUREMENTS OR DISTANCES QUOTED ARE APPROXIMATE AND SHOULD NOT BE USED TO VALUE A PROPERTY OR BE THE BASIS OF ANY SALE OR LET.

Area Map



Energy Efficiency Graph



These particulars, whilst believed to be accurate are set out as a general outline only for guidance and do not constitute any part of an offer or contract. Intending purchasers should not rely on them as statements of representation of fact, but must satisfy themselves by inspection or otherwise as to their accuracy. No person in this firm's employment has the authority to make or give any representation or warranty in respect of the property.

43- 45 Fortess Road, Kentish Town, London, NW5 1AD

Tel: 020 7284 4343 Email: als@matthewjames.co.uk www.matthewjames.co.uk